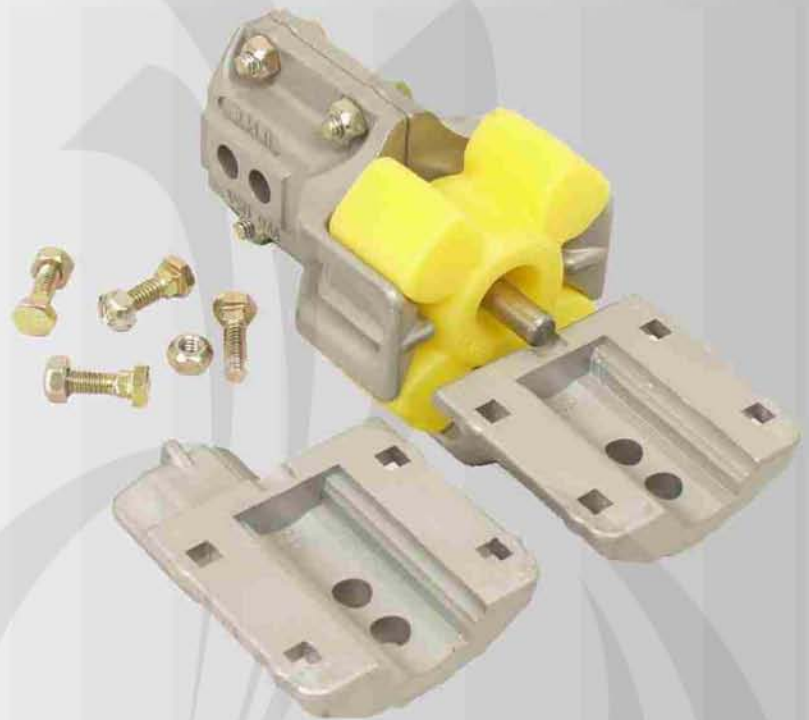


ALIGNMENT DRIVE LINE COUPLER

Evaluation Specifications

- * Same great load arms and urethane insert as the standard coupler with the addition of an alignment rod.
- * Alignment rod hold insert in place and coupler in alignment under extreme or sudden loads.
- * Designed for use in extreme duty environments: heavy soils, Larger tire diameter, Higher torque motors, and stronger gearboxes.
- * Designed and tested under extreme loads to ensure coupler failure and prevent damage to gearbox.
- * 70% increase in load carrying abilities.
- * Urethane insert offers an environmentally stable insert with better resistance to UV rays and chemicals.
- * Grooved insert option converts any coupler assembly for a towable application.
- * UMC designed SQUEX bolts allow easy access to tighten nuts and creates unique bolt anti-rotation feature.
- * 75,000 PSI high strength bolts and prevailing torque type nuts.
- * High torque conditions compress inserts instead of shearing them.
- * Shock attenuation insert allows for softer starts and stops.
- * Ideal for high-torque, slow-speed conditions with severe back driving.
- * Curved pressure pads compensate for out of line conditions.
- * One year limited warranty.

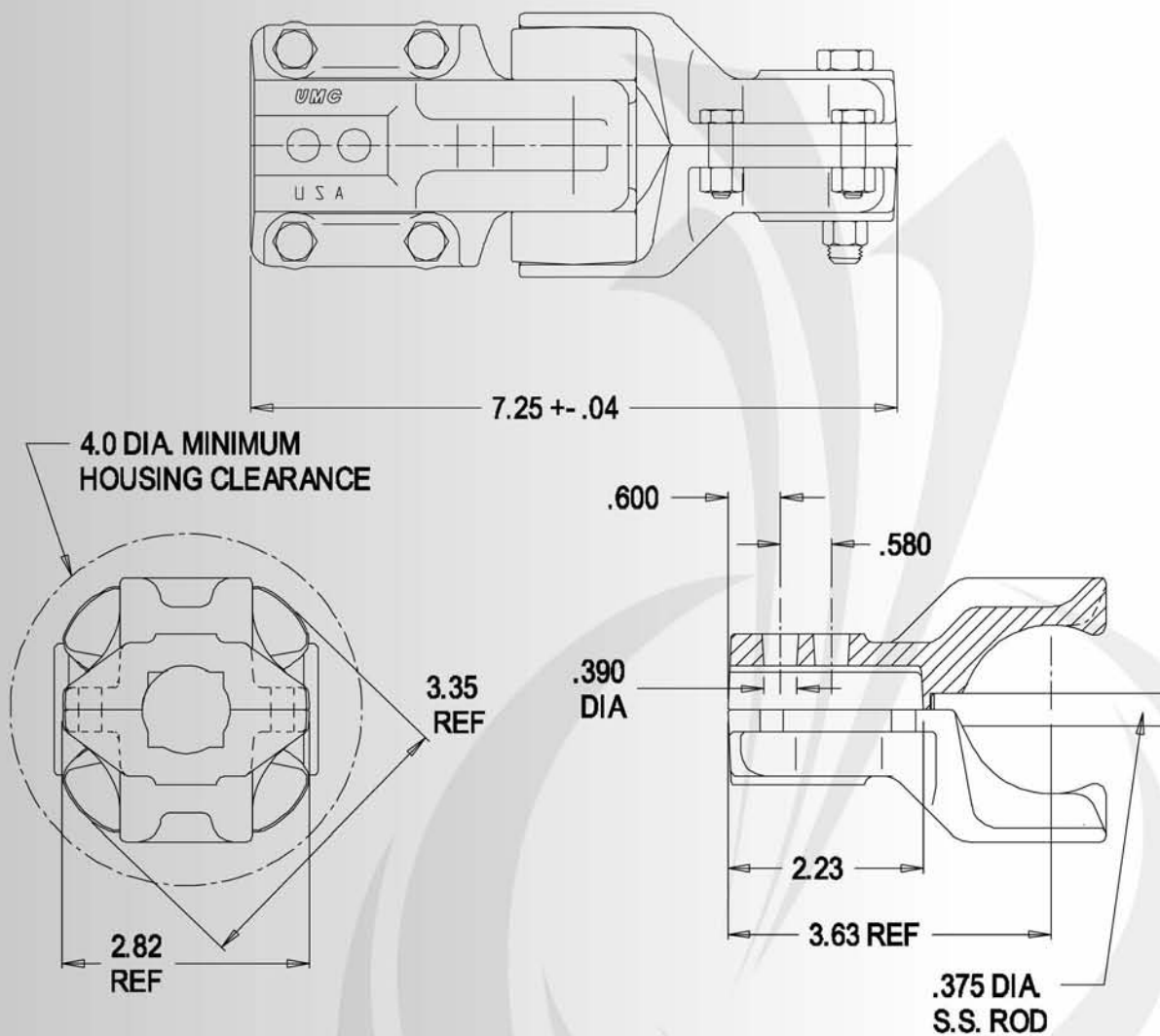
with the new higher torque, longer life urethane insert and keeper pin included



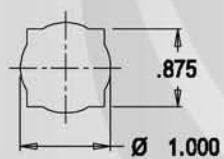
Model Numbers:

→ 021-M	1" rd. & 7/8" sq. (tow)
---------	-------------------------

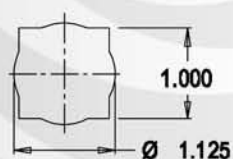
Dimensional Drawing Drive line Coupler



Available shaft configurations



#1 A



#8 G